



les trois baudets

TECHNICAL RIDER

CONCERT HALL

UPDATE SEPT 2024

PAGES :1- 14

64 BOULEVARD DE CLICHY, 75018 PARIS

CONTACTS

PRODUCTION LEADER

THOMAS GARRIOT

Email : regie@lestroisbaudets.com

Portable : (+33)6 44 91 68 69

PRODUCTION MANAGER

TEMAÏ RAUDALES

Email : exploitation@lestroisbaudets.com

Portable : (+33)7 69 83 72 62

PRODUCTION COORDINATOR

AMELIE JUSTE

Email : amelie@lestroisbaudets.com

COMMUNICATION

SABRINA BENREHAB

Email ; sabrina@lestroisbaudets.com

CULTURE AND SOCIAL INCLUSION PROGRAMME

AGNES PROUIN

Email : agnes.madline@gmail.com

INFO:

Email : info@troisbaudets.com

Tél : 01 42 62 33 33

ACCÈS

MAIN ENTRANCE

Les Trois Baudets
64 Boulevard de Clichy
75018 Paris

OPENING HOURS

concert hall : 19h - 23h
Restaurant : 19h - 22h
Bar : 19h - 02h

Metro :

Metro 2 - BLANCHE
Métro 2 & 12 - PIGALLE

ACCÈS

person with reduced mobility

ACCES LOADING DOCK

2 rue Coustou
75018 PARIS

NO FIX LOADING DOCK / vehicle must be removed after unloading

CAR PARK OPTIONS

Parking Mansart :

7 rue Mansart, Paris 9e (5 walk).
Tèl : 01.42.85.15.99.
HIGHT: : 1.90M

Parking Rédélé :

11 rue Forest, Paris 18e (7 walk).
Tèl : 01.43.87.57.18.
HIGHT : 2.40M

Parking Europe / Rome - Batignolles :

43 Bis, Boulevard de Batignolles, 75008 PARIS
Tèl : 01.45.22.32.54.
15 min walk
ou Métro Line 2 / Station ROME (2 stations to BLANCHE)
HIGHT : 3.00M

CONSTRUCTION DETAILS

HALL CAPACITY

166 foldable seat/ total capacity 200

STAGE DIMENSIONS

Length: de 4.5m à 7.6m

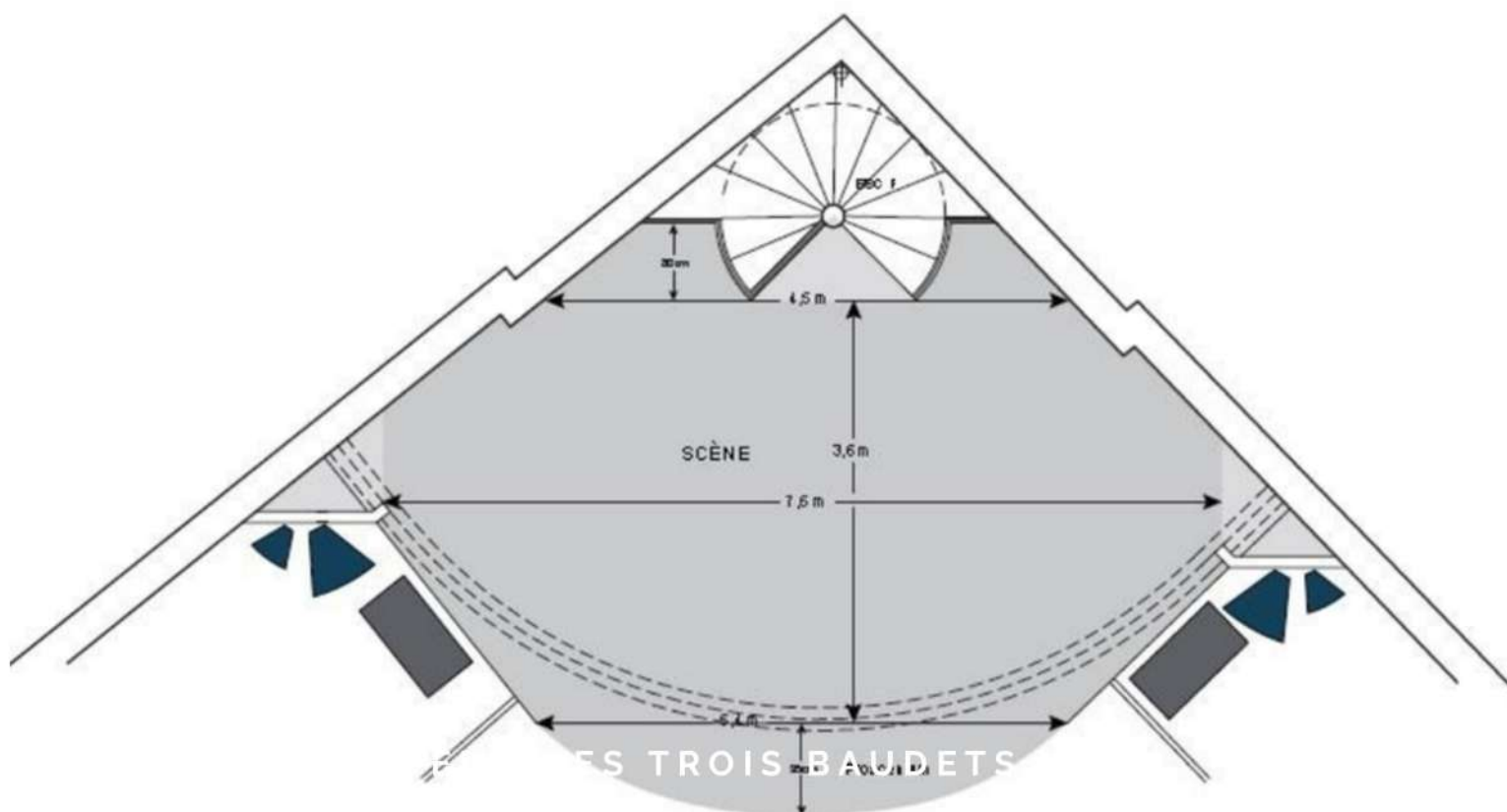
Width: 3.6m

Height:

DRESSING ROOMS

taille ?

REST AREA : refrigerator, kettle, filter coffe machine, chairs, iron, ironing board, hair dryer



SOUND TECH RIDER

DIFFUSION

4x L-ACOUSTICS 12XT
2x L-ACOUSTICS SB118
4x L-ACOUSTICS 8XT
(rappels salle & bergeries)
2x L-ACOUSTICS LA4
(amplification & processing)

MONITORS

6 Circuits de retours scènes
+ 6 circuits en XLR sur le plateau
pour des Ear monitors
6x L-ACOUSTICS 12XT
3x L-ACOUSTICS LA4
(Amplification & processing)

Sound Limitation : 102 dB(a) / 118dB(c) mid value 15min (by the law 2017-1244).

CONSOLE & PROCESSING

1x MIDAS PRO 1
Dynamic processing and internal effects (Documentation available upon request)
+ Remote Ipad 2 Mini via routeur Wifi D-link via console
2x MIDAS DL153 (32IN 16OUT) Rack on stage / AES50 link to the control room from the stage.
1x LECTEUR CD / Appart pc1000R (port usb & sd card)

"THE CONTROL ROOM IS LOCATED ON THE BALCONY.

A 24/8 ANALOG MULTICORE CABLE IS ALSO AVAILABLE BETWEEN THE CONTROL ROOM AND THE STAGE

MICROS ET DI

1 AKG C451 B
1 AKG C535 EB
2 AUDIO - TECHNICA ATM350
2 NEUMANN KM184
3 SENNHEISER 904B
1 SENNHEISER MD421
1 SENNHEISER E865
1 SHURE BETA 52
1 SHURE BETA 91
1 SHURE BETA 57
2 SHURE BETA 58

5 SHURE SM57
5 SHURE SM58
2 QLX SHURE (2 capsules SM58
& 1 Beta58 ("upon request")

microphone stands :

9 SMALL
1 MEDIEUM
11 LARGE
3 LARGE/ ROUND BASE

Direct Input boxes :

8 DI ACTIVE BSS AR133
2 DI PASSIVE RADIAL PROD1

BACKLINE

PIANO & KEYBOARD

KEYBOARD Roland FP4

Yamaha U1 SH2 PE Silent Piano

DRUM KIT(YAMAHA RECORDING CUSTOM)

Kick: 22"

Toms : 10", 12", 14"

Snare Tama MT1455 DBN 14"

Cymbales Zildjian ZXT

HH 14, Crash 16, Ride 20

Hardware

4 stand Cymbales / 2 snare stands / 1 Charley stand with tilter

1 Kick pedal / 1 stool

GUITARE AMP

Fender Hot Rod Deluxe 112

Fender Reverb Deluxe

BASSE AMP

Fender Rumble 100

AER Basic Performer

STANDS

Guitare / basse stands x 3

Electric Guitare stands x 3

Keyboard Stands x 4 RTX

CONDUCTOR STANDS

Conductor stand folable x 4 /conductor stand light x 3

**ALL BACKLINE REQUESTS MUST BE
MADE IN ADVANCE OF THE
CONCERT VIA EMAIL TO THE
PRODUCTION MANAGER:
REGIE@LESTROISBAUDETTS.COM**

VIDEO

1x Video-beamer :

Panasonic PT-D6000EK (6500 Lumens) fix/concert hall

1x screen 3M X 2M removable

1x HDMI FOH Cable

1x Link extender HDMI Stage <=> FOH

PERMANENT LIGHTNING EQUIPMENT

CONSOLES

1 GrandMA2 Light (version 3.9.60.65)

Lighting Equipment

14x PAR64 1000W black long

23x PC 1000W 310 HPC

4x Profile Spot Robert Juliat 613SX

MOVING HEADS

4x Spot Martin Mac 250 Entour 16-bit

4x Wash Robe Colorwash 250AT mode 3

4x Wash Martin Rush MH6

ACCESSORIES

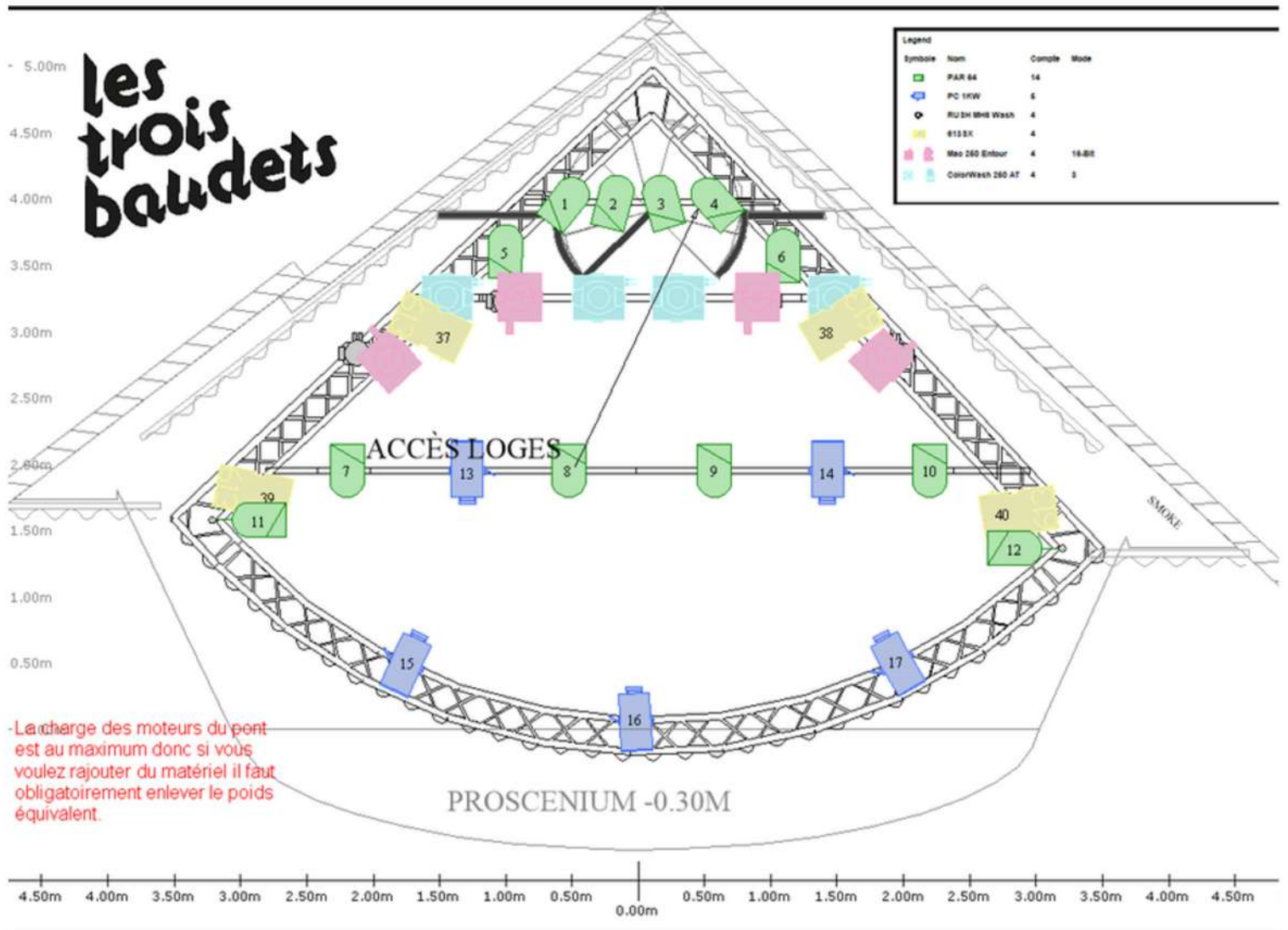
1x Haze Machine "UNIQUE 2.1"

POWER DISTRIBUTION

1x Dimmer Rack Robert Juliat Trivoli 2x24 circuits

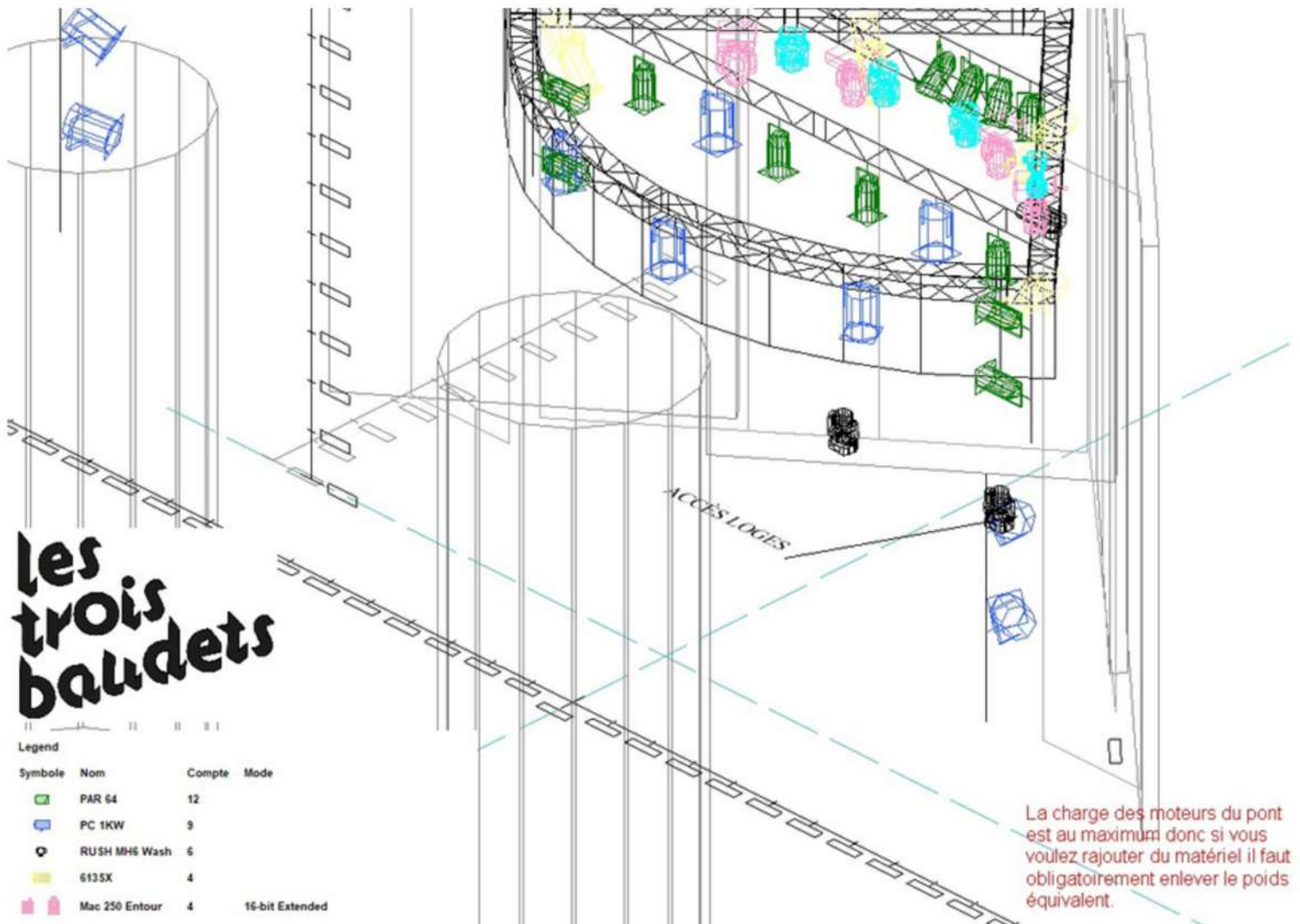
LIGHT PLOT

**IMPORTANT: OUR LIGHTING PLAN IS FIXED
FOR ANY REQUESTS, PLEASE CONTACT US.
HEIGHT UNDER GRID: 4.45M**



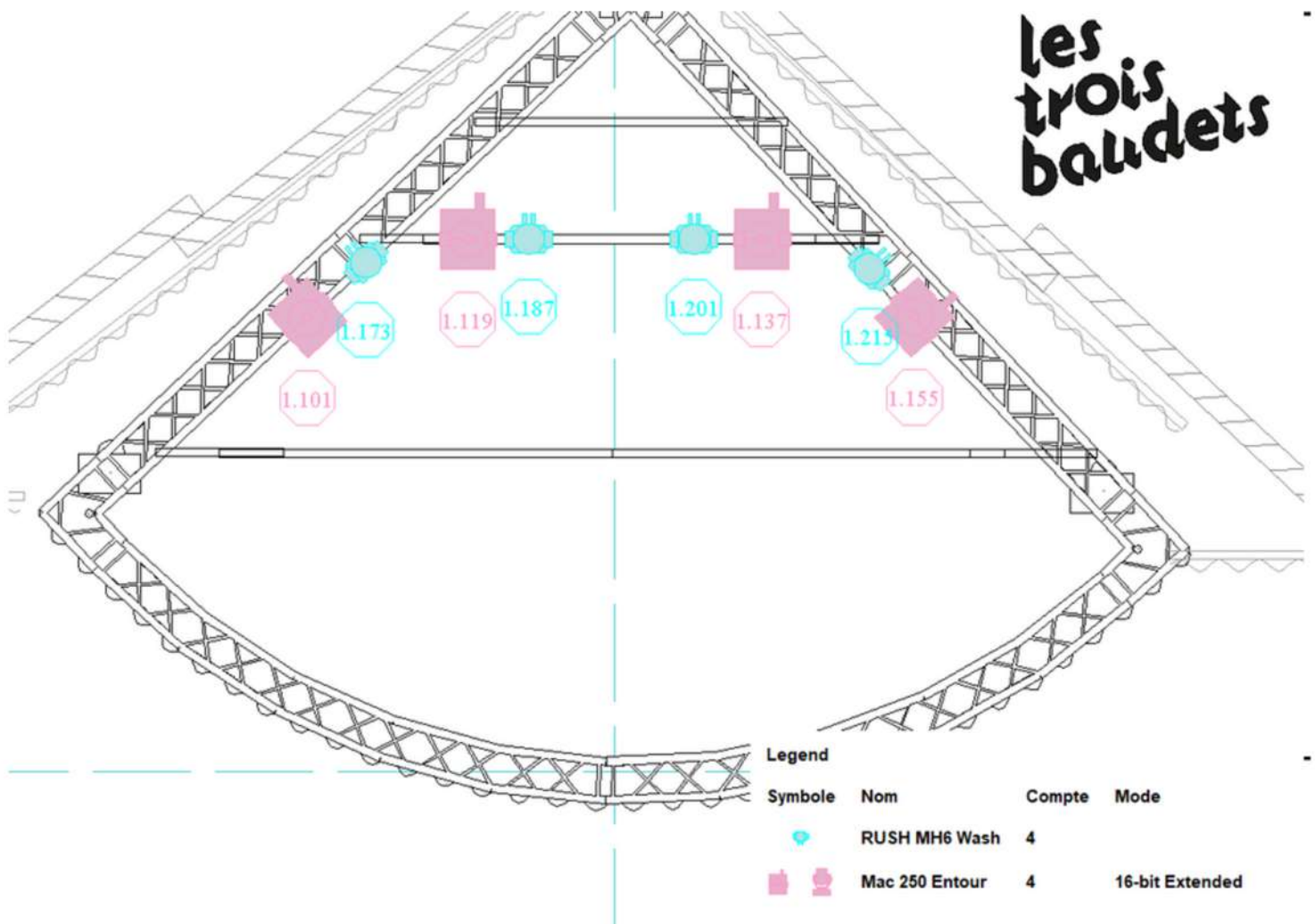
LIGHT PLOT

**IMPORTANT: OUR LIGHTING PLAN IS FIXED FOR ANY REQUESTS, PLEASE CONTACT US.
HEIGHT UNDER GRID: 4.45M**



LIGHT PLOT/OVERHEAD VIEW

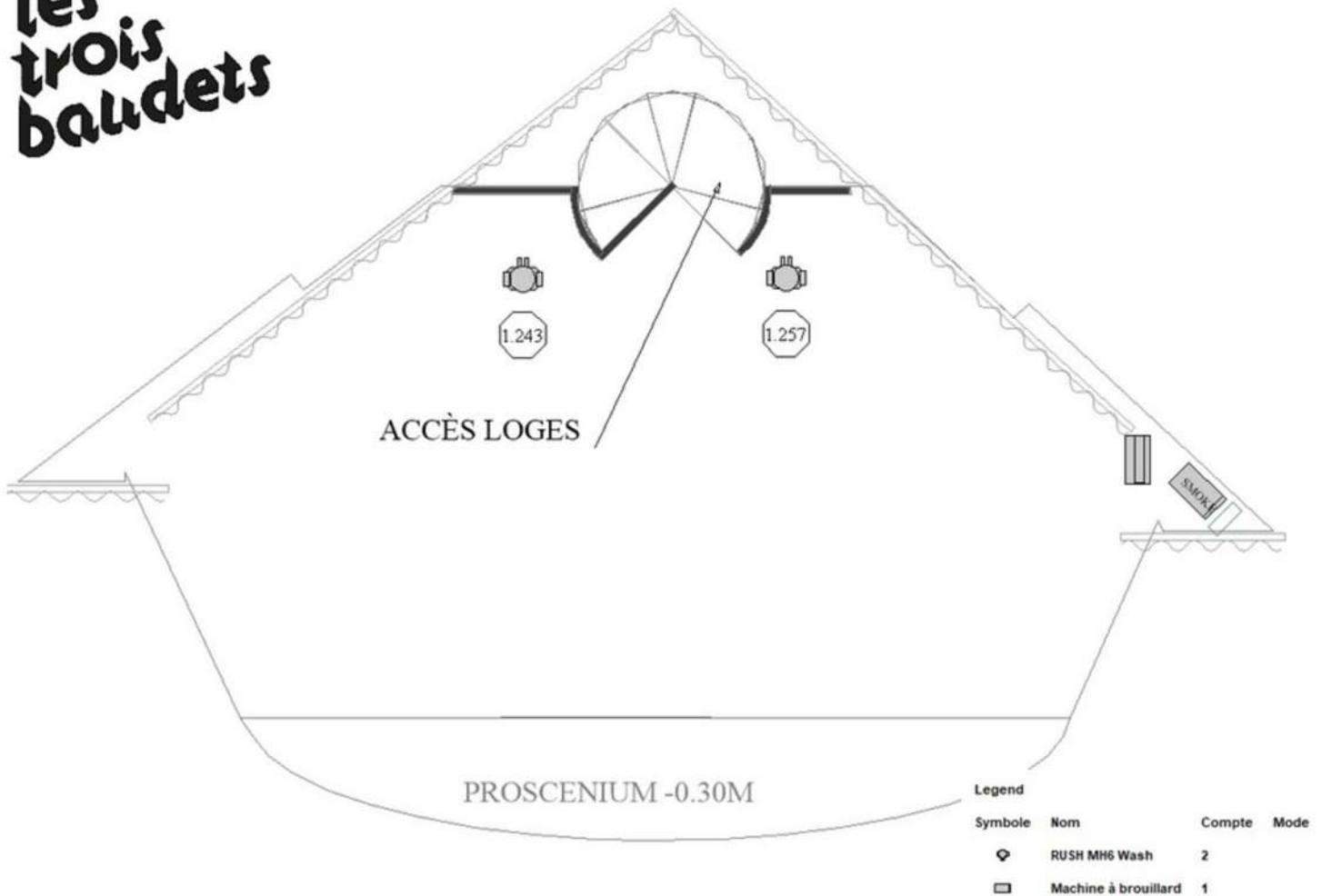
IMPORTANT: OUR LIGHTING PLAN IS FIXED
FOR ANY REQUESTS, PLEASE CONTACT US.
HEIGHT UNDER GRID: 4.45M



PLAN DE FEU / SOL

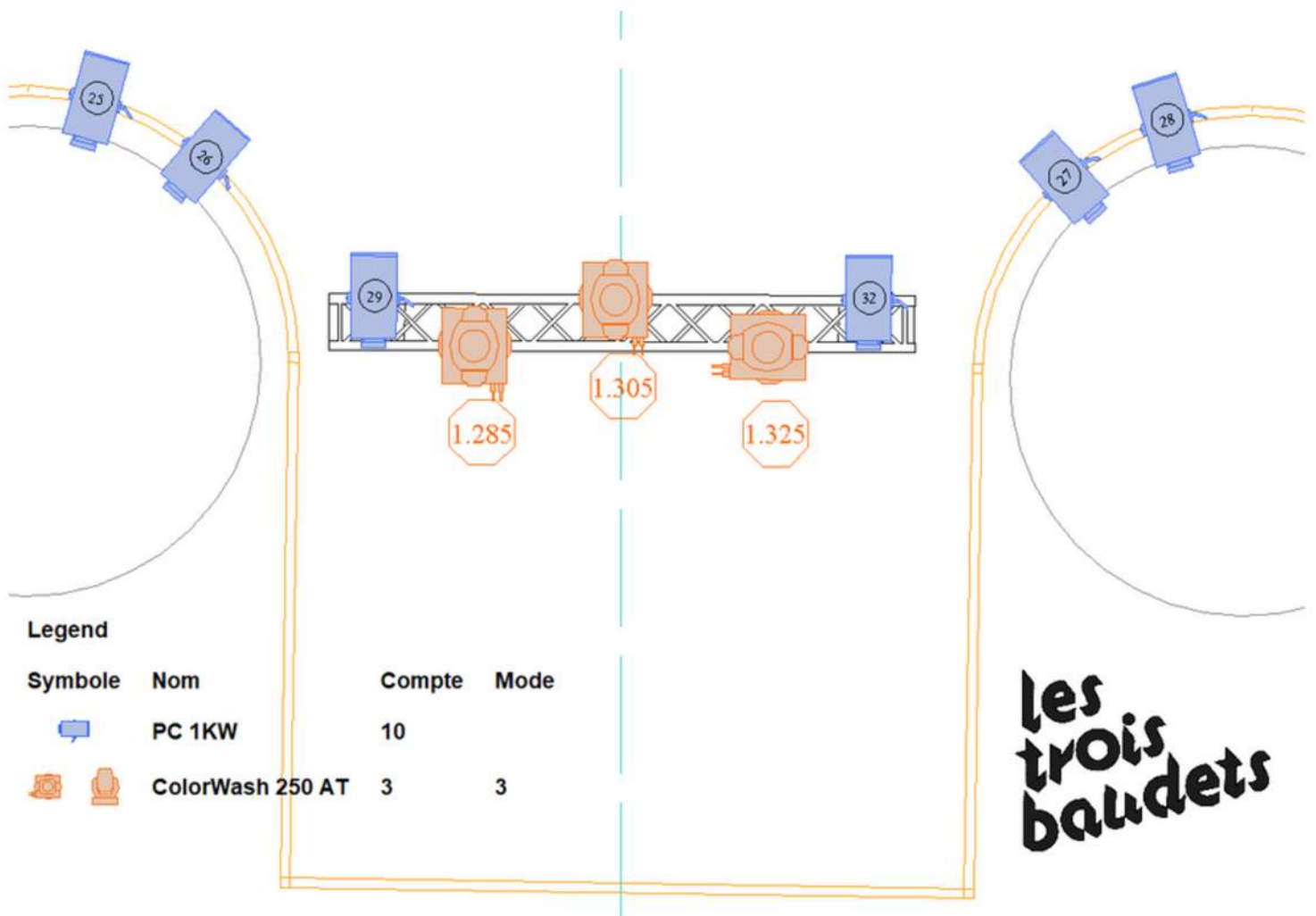
IMPORTANT: OUR LIGHTING PLAN IS FIXED
 FOR ANY REQUESTS, PLEASE CONTACT US.
 HEIGHT UNDER GRID: 4.45M

les
trois
boudets



PLAN DE FEU / PONT DE FACE

IMPORTANT: OUR LIGHTING PLAN IS FIXED
FOR ANY REQUESTS, PLEASE CONTACT US.
HEIGHT UNDER GRID: 4.45M



LIGHT EQUIPMENT

Adresse DMX	Fixture	Position
1.1	Par 64	Lointai
1.2	Par 64	n
1.3	Par 64	Lointai
1.4	Par 64	n
		Lointai
		n
1.7	Par 64	Lointai
1.8	Par 64	n Mid
1.9	Par 64	Mid
1.10	Par 64	Mid
1.11	Par 64	Lat J
1.12	Par 64	Lat C
1.13	PC 1Kw	Mid
1.14	PC 1Kw	Mid
1.15	PC 1Kw	Front
1.16	PC 1Kw	Front
1.17	PC 1Kw	Front
1.37	Dc 614 1Kw	Lointain
1.38	Dc 614 1Kw	Lointain
1.39	Dc 614 1Kw	Lat J
1.40	Dc 614 1Kw	Lat C
1.25	PC 1Kw	Face Colonne
1.26	PC 1Kw	Face Colonne
1.27	PC 1Kw	Face Colonne
1.28	PC 1Kw	Face Colonne
1.29	PC 1Kw	Face
1.32	PC 1Kw	Face
1.43	PC 1Kw	Accueil Sol
1.44	PC 1Kw	Accueil Sol
1.45	PC 1Kw	Accueil Sol
1.46	PC 1Kw	Accueil Sol

Adresse DMX	Fixture	Position
1.173	Rush MH6	Lointai
1.187	Rush MH6	n
1.201	Rush MH6	Lointai
1.215	Rush MH6	n
		Lointai
1.101	Mac 250 Entour 16-Bit Ext	Lointai
1.119	Mac 250 Entour 16-Bit Ext	Lointai
1.137	Mac 250 Entour 16-Bit Ext	Lointai
1.155	Mac 250 Entour 16-Bit Ext	n
		Lointai
		n
1.243	Rush MH6	Lointai
1.257	Rush MH6	n Sol
1.285	ColorWash 250 AT Md 3	Face
1.305	ColorWash 250 AT Md 3	Face
1.325	ColorWash 250 AT Md 3	Face
1.511	Look Uniq 2.1	Sol
1.18	Blinder	Mid
1.41	PC 1Kw	Salle
1.42	PC 1Kw	Salle
1.47	PC 1Kw	Salle
1.48	PC 1Kw	Salle
1,36	Blinder Balcon	Salle
1.21	PC 1Kw	Lat J
1.22	PC 1Kw	Lat J
1.23	PC 1Kw	Lat C
1.24	PC 1Kw	Lat C

les
trois
boudets

TECHNICAL STAFF

We will refer you to a professional technical team acquainted with the equipment and premises. The number of technicians will vary according to the specific needs of each production. A free estimate can be provided on request.

BARS & RESTAURANT

BAR & RESTAURANT

Capacity : 50 sitting / 130 standing

Surface : 120m²



BAR/STAGE LEVEL

Capacity : 100 PAX

Dimension: 100m²



FOR PRIVATIZATIONS, PLEASE CONTACT AMÉLIE: PRIVATISATION@LESTROISBAUDETTS.COM